

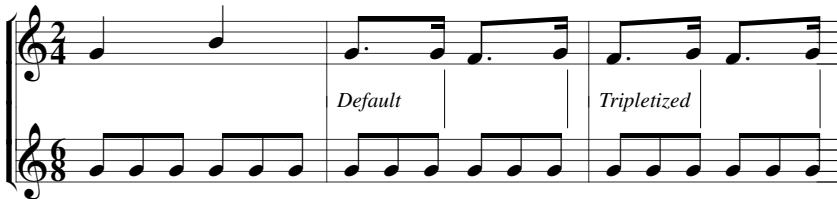
# PMW Demonstration

This document is a demonstration of some of the fancy things that can be done using the PMW music typesetting program. It is generated from a single PMW input file, using multiple 'movements'. Other examples show longer extracts of real music.

## Custom time signatures and old clefs



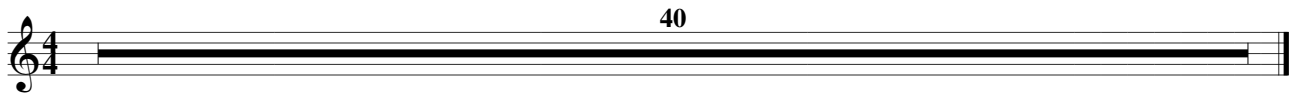
## Mis-matched time signatures and tripletizing



## Incipits and Ossia



## Tacet



## Ancient



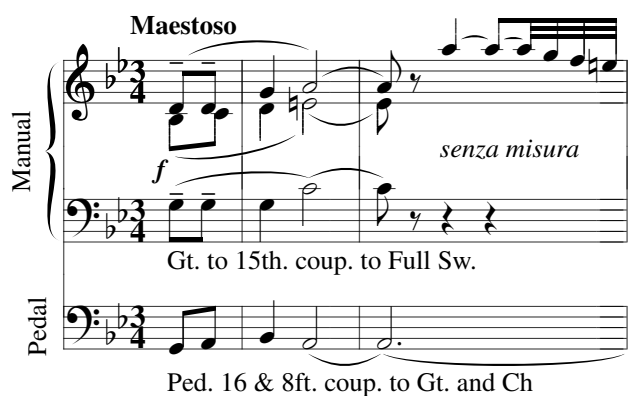
## Modern



## Gaps in slurs and lines



## Two parts to a staff



**Transposed notes and key/chord names**

C                      Eb                      D  
 Untransposed input    Transpose +3    Transpose -1

**Guitar tablature**

**Noteheads etc**

**Slur control**

**Fancy notations**

*effervescent*    *sfz*    (Go to beginning)  
 Piano    *f*    *mp*    *sfz*

(Before each repeat pause briefly.  
 When playing through do NOT pause.)

**Text tricks and drawing**

Normal Squashed **Stretched** *Slanted* Weird *Italic* **Bold** *Bold italic* **Big** SMALL CAPS Small

Sloping down Sloping up Vertical Vertical Upside-down



Scale practice must be maintained

0 1 2 3 0 1 2 3 0 1 2 3 0 1 2  
 E F B C E F B C  
 SEMITONE SEMITONE SEMITONE SEMITONE

**Stave lines (up to 6 can be specified)**

zero one two one+two three four five six

1. This is an example of a footnote, commonly used to discuss metronome markings. Footnotes are attached to a specific bar, as opposed to footings, which belong to a page.